



Prepare the way!



Evergreen Echoes

LWML Washington-Alaska District

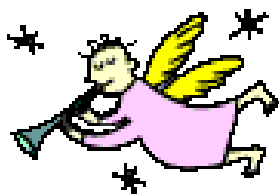
SUMMER, 2013

DISTRICT PRESIDENT MARYLYNN HUNTWORK

In This Issue

President's Thoughts	1
LWML	2
LWML WA-AK	
District News	3
Zone & Society Corner	10
District Roster	11
Grant Update	12

**EVERGREEN ECHOES FALL
DEADLINE: JULY 31, 2013**



Mission Statement of the LWML

The mission of the Lutheran Women's Missionary League is to assist each woman of The Lutheran Church—Missouri Synod in affirming her relationship with the Triune God so that she is enabled to use her gifts in ministry to the people of the world.

Greetings to you in the name of the Father whom we “serve with gladness,” and from the LWML Washington-Alaska District,



Spring is supposed to be here. However, we still have snow in the desert, valleys, hills and mountains of our state. Weather is so unpredictable. We never know what will happen next. With God we know what is to come. He tells us through His word. His promise to send Jesus as the way, the truth and the life hasn't changed and won't change even to the very end of the age. He gives us everything we need to spread the good news of salvation to others. *Go therefore and make disciples of all nations, baptizing them in the name of the Father and of the Son and of the Holy Spirit, teaching them to observe all that I have commanded you. And behold, I am with you always, to the end of the age.*” Matthew 28: 19-20

Have you been PINGed? Are you Prepared, Inspired, Nourished and ready to Go? Zone Joyshop attendees led by PING 2012 leaders learned ways to Prepare, Inspire, Nourish and Go share the good news of Christ and the work of the Lutheran Women's Missionary League. PING presentations “At the tone...leave a message,” are scheduled for many Fall Rally events. Watch for dates!

There is still time to register for LWML Convention, Pittsburgh 2013! Join the other 39 Washington-Alaska District attendees and consider going to this fantastic gathering of sisters and brothers in Christ.

This 2012-2014 Biennium “Prepare the Way” is filled with preparation, love and thankfulness. We are learning that it is easier to share our story of faith with others; to be messengers of God and spread the Good News of Salvation to all people with God's help, leading and directing us to be “Filled With His Will” at the 2014 LWML WA-AK District Convention, June 20-22, Wenatchee, Washington.

As servant leaders we should approach each day with the heart of a servant. Sometimes God sends workers for what they will receive

President's article cont.

rather than what they will give. Love and care for those who serve with us. Be confident in God. God doesn't send the equipped; He equips those He sends!

It is a pleasure to serve the Lord together with you,
MaryLynn Huntwork
LWML WA-AK District President

LWML

Note to LWML Convention Go-ers, Pittsburgh, June 27-30, 2013

- ◆ Delegate Orientation (Thursday, June 27, 3 p.m.)
- ◆ District Caucus and District Photo (Thursday, June 27, 4-6 p.m.)
- ◆ Past District Presidents will meet (Time and place TBA)
- ◆ YWR's Meet and Greet (Thursday, Time and place TBA)
- ◆ The daily convention newsletter, "The Ripple Effect" will have information that answers the "who, what, when, where" questions at the convention. Please read it.
- ◆ Please let President MaryLynn know if you will be attending the convention.



Another "Yea, God" Moment!

LWML Surpasses Mission Goal for 2011-2013 Biennium

The Lutheran Women's Missionary League (LWML) is pleased to announce that the 2011-2013 Mission Goal of \$1.825 million was met and has been surpassed. With all praise and thanksgiving to God, the total amount received through faithful mite donations as of April 13, 2013, was \$1,834,269.27.

In addition to filling your Mite Box, you may also donate to the LWML in the following ways:

- ☐ Online at www.lwml.org by clicking on the "Donate" button;
- ☐ Using PayPal on FaceBook at www.facebook.com/theLWML, click on the Mite Box titled "Donate Today";
- ☐ Gift Planning Services;
- ☐ Endowment Fund;
- ☐ Employer Matching Funds; and
- ☐ Thrivent Choice Dollars SM - eligible Thrivent members may select "International Lutheran Women's Missionary League." Go to www.thrivent.com or call 1-800-THRIVENT (1-800-847-4836) and state, "Thrivent Choice."

Checks or money orders should be made to: Lutheran Women's Missionary League, PO Box 411993, St. Louis, MO 63141-1993

Please remember the LWML in your estate plan.

LWML WA-AK District

Board Meeting

We're on our way to Pittsburgh!



Board meetings aren't all business. Fun, laughter and fellowship are a big part of all the meetings.



Concentrate, President MaryLynn, concentrate!



At a recent Board meeting, Traci Blank shared how God is using her in the mission field in her home town. Pray and be ready to say "Yes, Lord."

Parliamentarian Carol, you have only two more times to talk.



Could you please repeat that, President MaryLynn?

Counselor's Chat Corner

Pleasant Surprises

Little Suzy said, "Grandma, do you remember when you were a little girl." Grandma replied, "I do." Suzy said, "I suppose you remember how good it felt to be surprised by a new pair of shoes." What do you think Grandma did?

Unexpected gifts are wonderful surprises. Unexpected gifts may be meaningful and delightful. It is great to get the unexpected e-mail from a friend, a telephone call from someone who was thinking of you, a random deed of kindness from a stranger, a surprise gift of money, or a gift of homemade jam etc. Thank God for the unexpected kindnesses in your life as well as for His love and for our Savior Jesus. Everyone who is committed to Jesus will have a very pleasant surprise of eternal happiness.

Pastor Ken Schauer
LWML Counselor East



District Structure Committee

Gardening => Bylaws

How many of you have started spending time in the yard, garden, or flower bed getting rid of the fall and winter debris, and trying to stay ahead of the weeds? Getting started can be a challenge: breaks in the weather, time, the physical work of the task, etc. The same can be said for the bylaws of your society or zone. The bylaws probably have not been weeded out to bring them up to date. Not always a fun task, yet one which needs to be done. The Structure Committee is here to help.



Steps to follow: Go to the Washington-Alaska District website (www.wa-aklwml.org) for the sample bylaws (use the “Downloads” button to get there), use it as a guideline to make the changes that are needed based on how your organization works. Submit it Marie Chow. She will then submit it to the Structure Committee for review. The bylaws will then be returned to you for correction and final approval by your group. Once all these steps have been finished, email or mail the dated copy back to Marie. You are finished! Clap your hands together like you do when you are getting the dirt off your hands. The weeds are gone and the updated bylaws are behind you. Congratulations!

Your District Structure Committee,
Sandy Giesler; Ruth Ann Shimoi; Marie Chow, Chairman

**PLEASE COPY THIS ISSUE FOR THE LADIES IN YOUR CHURCH!
PRINT IT IN GRAYSCALE FOR COPYING ON THE COPY MACHINE OR
PRINT OUT ALL THE COPIES IN COLOR. IF YOU WOULD LIKE TO
RECEIVE ISSUES VIA E-MAIL, PLEASE CONTACT THE CIRCULATION
MANAGER, DENISE CRAWFORD.**

Christian Life

God is Love

As I walked through the High Dessert in Central Oregon I came upon this heart shaped rock – I believe that God placed this rock there to remind me... *“And so we know and rely on the love God has for us. God is love. Whoever lives in love lives in God, and God in them.”* 1 John 4:16 (NIV)



“Here we have a firm foundation, Here the refuge of the lost: Christ, the rock of our salvation, is the name on which we boast. Lamb of God for sinners wounded, sacrificed to cancel guilt! None shall ever be confounded who on Him their hope have built.” LSB 451 v. 4

Look for all the exciting retreat information in this EE and on the district web site! Get your registration in by August 10, 2013, to save \$10. Then convert that \$10 bill into two purple \$5's and bring them to the retreat for a special treat. Come join us for Worship, Fun and Fellowship! We are so excited and can't wait to see you at the retreat!

Easter Blessings Everyday! Your sisters in Christ,
The Christian Life Committee
Cheryl L. Beyer, VP Christian Life

“HOLY ✠ HOLY ✠ HOLY”
The work of the angels...

"HOLY ✠ HOLY ✠ HOLY"

The work of the angels...

And one called to the other and said:

"Holy, Holy, Holy, is the LORD of hosts; The whole earth is full of His glory!"

Isaiah 6:3



Come join us!

LWML WA-AK District Retreat

**Wesley Inn – Gig Harbor, WA
September 27-29, 2013**

Come receive God's gifts in Word and Sacrament as we
worship together and learn what the Bible teaches about
ANGELS!

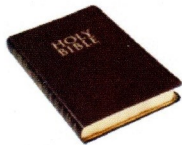
Come enjoy fellowship and fun with your sisters in Christ!

Pack your Bible and suitcase!

Bring your Mite Auction \$\$ (some Purple \$5's too)

and get ready for the

"Zone-mazing" Entertainment and Mite Auction Gift Baskets!



Pastors Wenzel, Onken and Ries - are the Speakers and Bible Study Leaders!

Michael Plagerman - is back to play wonderful music for us!

Registration, Hotel Information and Ingathering information
will be in the bulk mailing, *Evergreen Echoes* and district website <http://wa-aklwml.org>



"HOLY ✠ HOLY ✠ HOLY"

The work of the angels...

LWML WA-AK District Retreat
7 PM September 27- Noon September 29, 2013
Wesley Inn
Gig Harbor, WA

Name _____ Are you under 35? ____ or teen ____?
Address _____ City _____ State _____ Zip _____
Phone _____ Cell Phone _____ Email _____
Church _____ Zone _____

Retreat Registration Fee \$85 per person

*****Early Bird Special - postmarked/paid by August 1, 2013 pay only \$75.00 per person*****

- ♦ **MEALS:** Your retreat registration fee includes 2 meals - Saturday lunch and dinner.

Friday dinner is on your own.

(Saturday and Sunday breakfast are provided by the hotel and included in the room reservation.)

Please list any dietary restrictions or allergies: _____

Retreat Registration deadline is August 25th.

Please make checks (\$85 or *early bird special* \$75 per person) payable to LWML Washington-Alaska District. You will receive a confirmation email or letter which will include a map, a list of items to bring, and other important information. No retreat registration refunds will be given after August 25th.

- ♦ ♦ **HOTEL:** The retreat registration fee does not include hotel room lodging.

You are responsible to make your own hotel reservations! Get your hotel reservation in early so you and your roommates can take advantage of our special block room rates. The block room rates start at \$118.99 + tax *per night*. Your total price for 2 nights will depend on how many people are sharing your room and the type of room you choose. Please do your best to find roommates. Please try to have 3 or 4 to a room. However, if you need help finding a roommate, contact the registrar. The registrar will do her best to assist you.

If you have special mobility needs, please let the hotel know so that you receive a room on the first floor.

Room Reservations: Please call the Wesley Inn at (253) 858-9690 to make your reservation - tell them you are with the LWML WA-AK District Retreat so that you get our block room rate.

♦ **TRAVEL INFO**

_____ I will be traveling by car with _____
_____ I will be traveling by plane AND NEED A RIDE TO AND FROM THE HOTEL.

Arrival: Date _____ Time: _____ Airline/Flight # _____
Departure: Date _____ Time: _____ Airline/Flight # _____

(Include your itinerary with this registration form and I will assist with arrangements for you to be picked up at the airport.)

Send registration form and retreat registration payments to Registrar Julie Onken at 6705 67th Dr. NE Marysville, WA 98270. Questions? Call Julie at (360) 659-6038 or email at onken@clearwire.net.

Friends Into Serving Him®

Spring is a busy time for our teen girls. Their thoughts turn to the end of the school year, prom and summer jobs. As they make their summer plans, be sure to get the convention in Wenatchee on their calendar early for next summer. There will be lots for them to do both in and out of the convention center. It will be an experience for them to learn about missions, their LWML story and grow in their walk with God. I can't wait to share this experience with your girls. Be sure they have a responsible adult coming along too.

The fall retreat, however, is before the convention. This year the retreat is in Gig Harbor, Washington. The retreat planning committee is working hard on lots of fun and faith building activities for all the participants. There will be some time for the teen girls to fellowship with one another, but the retreat is jam packed with great activities for women of all ages. NOW is the time to recruit your girls for this weekend of fun and fellowship. It will be a great way for them to get to know the girls they will see in Wenatchee.



Interested in getting teens involved in missions? Want to start a Friends Into Serving Him® group? Contact me, Julie Funfar, for more information. I would love to come to your zone rally to share!

Julie Funfar, Friends Into Serving Him®—Chairman

Recycling news

Our competitor for this year's Recycle Rumble was St. Patrick Catholic School in Memphis, TN. On April 26th we had 592 points to their 241. The team with the most points earned between Feb 13th and April 30th receives a 25% bonus. Way to go Rumlbers!



Now for our Recycling Contest: The bulk mailing will have detailed information so make sure that information is shared. In short – the zone who wins will have \$100 donated to the Scholarship Fund in their honor and the zone president will receive a gift card. Help your zone be the recipient – have a recycling roundup. You may email me for labels that are affixed when your own boxes are used. The Funding Factory boxes have labels on them already. You may also e-mail me with any questions you may have.

Funding Factory accepts all cartridges, even damaged and remanufactured ones. Digital Cameras, Laptops, GPS systems, MP3 Players, ink and toner cartridges (no toner tanks) are all accepted. Pack items following the 20/20 rule: at least 20 items or at least 20 lbs. but less than 40 lbs. Wrap cartridges in newspaper to protect electrical items. More information is available at www.fundingfactory.com

Judy Peraino, Recycling Coordinator

"The earth is the LORD'S, and everything in it," Psalm 24:1a

Leader Development Our Mission

Why is it important to involve more of our LCMS sisters in the Lutheran Women's Missionary League? As Margaret Ebert recently reminded the District Board of Directors, we can look to the LWML Pledge for an answer. Why do we "serve the Lord with gladness?" "To bring the lost and the erring into eternal fellowship with Him (Jesus)." Without Him we would all perish. Using the many resources offered by LWML, our faith will be strengthened, and we will be better able to reach out to others with the good news of Jesus Christ.

A new Bible study, "Every Picture Can Tell God's Story," is an exciting and contemporary program. It helps us use our own photos to tell our personal story of faith. This study can be used by women's groups, youth groups, Bible study gatherings, etc. In a six-session course, participants create a "Witness Album" to show what Jesus has done in their lives. For those who "scrapbook," just think of the creative opportunities – and the best thing about it is sharing Jesus! The Study Edition, #20422 - \$6.50 and Leader Edition, #20421 - \$7.50 are available at www.lwml.org (click on Bible Studies under the Resources tab), or by calling 1-800-252-LWML.

Speaking of photographs, the Leader Development Committee urges societies and zones to share their successful activities through the *Evergreen Echoes*, so that all of us can learn new ways to reach out. Just send your information to Sandi Schauer, the *Evergreen Echoes* Editor.

Your District Leader Development Committee
Margaret Ebert and Marilyn Schaefer, Chairman

Human Care Corner

Easter Greetings to all! I hope you had a truly blessed Easter.

Wow has it been a busy year! The Prayer Chain has been very busy!

We had a wonderful response to our Gifts of the Heart Ingathering at the district board meeting in March. We assembled 49 bags of nutrition bars, sweet treats, water and juices for the homeless at the Everett Lutheran Community Services. We also donated the cloth tote bags that were left over from the last convention in Olympia.

We are now anticipating the Amazing Retreat "Holy, Holy, Holy" in September. I hope you are too. It is going to be Spectacular! Watch for the Gifts of the Heart Ingathering information in the next bulk mailing. We are excited to bring supplies to Matthew's Meals at King of Glory in Gig Harbor.

Tell all of your TEENS to watch for information from Julie Funfar about their activities at the retreat. Traci Blank will have information on Short Term Missions for you to experience and resources to help you make it happen.

Blessings,
Sandi Hall, VP Human Care



Board members prepare the Ingathering Gifts for delivery to the Everett Lutheran Community Services.

Short Term Missions

Greetings to all!

I visited Our Savior in Okanogan for the North Columbia Zone Joyshop in April. I talked about how short term missions can be done at home or far away. I spoke about my own experiences with short term missions in Africa and at home. I also visited the Joyshop at Bethlehem in Hermiston, Oregon. I had Sara from Bukeeka, Uganda, with me. We told the ladies about the short term mission in Africa and how to make it happen. I felt a very positive response from the ladies at both Joyshops.

Be sure to watch for information at the retreat in September about a team forming a short term mission trip to Africa in summer, 2014.

Your Servant in Christ,
Traci Blank
Short Term Mission Committee Chairman



Young Women's Committee

Summer is here! That means the district retreat must be right around the corner! The Young Women's Committee hopes to have a chance to meet many of the young women in our district at the retreat in Gig Harbor on September 27-29, 2013. There will be special meal seating for young women attendees so that we can get to know each other better. We hope this retreat will be a refreshing time for you to reconnect with our Lord, and also to meet other young women from our district who share an interest in LWML.

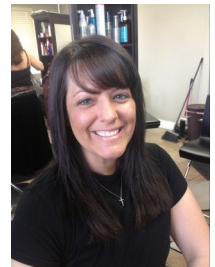
Societies, please consider sponsoring a young woman from your church so that she may attend the retreat! Invite her to attend and share a room with other members of your society. Offer to help with registration costs if your society is in a position to do so. The retreat experience could be a great introduction to the ministry of LWML, and is a great way to kick off the fall with energy and enthusiasm in your society! Serving the Lord with gladness,

Your Young Women's Committee,
Amanda Haan, Chairman
Chris White, Member



The Young Women's Committee is pleased to introduce our Washington-Alaska District Young Women Representatives who will be attending the LWML convention in Pittsburgh this June!

Andromeda White has lived in Alaska since the age of 12, and loves it! She has three children: Michael, Chase and Rosalie. Two of her children currently attend Anchor Lutheran School. Her oldest child will graduate this May, while her youngest will start school this August. Andromeda has been a member of Beautiful Savior Lutheran Church for about seven years. She attended a discipleship class there and became a member of her church's Missions Ministry Council. About two years ago, Andromeda began attending LWML and recently became the society secretary.



Outside of church activities: Andromeda is involved with the Anchorage Elks as the Youth Activities Chairman. She also plans monthly children's events for her community. She has a passion for helping where needed, and bringing people together. Andromeda keeps very busy with her family, working as a childcare provider and with her volunteering activities, but she would not have it any other way!



Heather Selset lives in Spokane, Washington, with her husband, Lee, and their fur babies: dogs, cats, and a chinchilla! Raised in Cadillac, Michigan, Heather joined God's family when she was 15. She was very involved in the church, and was the youth representative on the church's outreach committee. After receiving her Bachelor's Degree in Secondary Music Education at Concordia University, Ann Arbor, Michigan, and teaching high school music for three years in South Carolina, she moved with her husband to Spokane and became a part of the Holy Cross family. In addition to working at a firm that processes nuclear security background checks, Heather also works for the church.

Heather is the hand bell director, youth chimes director, a member (and occasional accompanist) for the choir, a praise team director, member of the Cross My Art committee, and also LWML society secretary. When not working or helping at the church, Heather loves to quilt, make costumes, knit, and bake. Heather loves being involved in the church in many ways, and looks forward to growing in her role in LWML. While attending the LWML national convention, she hopes to learn more about being involved in LWML, meeting wonderful women, and making unforgettable memories.

Washington-Alaska Zone and Society Corner



Zion Lutheran Snohomish

Zion Lutheran, Snohomish, quilters meet every Wednesday from 9:30 a.m.-12:00 noon to make quilts for Lutheran World Relief. Over 150 quilts are provided to both local and national organizations.

Picture 1: Kathy Kane, Karen Richard, Lillian Bartelheimer, Deveen Hintze, and Betty Trivett

Picture 2: Helen Heck, Jude Bosse, Shirley Heike, Janet Zwar

Picture 3: Paula Lauterbach, Theresa Barks-Black, Barbara Billington, Laraine Hunt, Myrtle Chase, Phyllis Reynolds

Rainier Zone Spring Joyshop

President Judy Ikerd challenged Cheryl Beyer to a Spring Hat Contest. Cheryl wore a handcrafted Fascinator hat. Judy wore a truly Spring hat with pretty "springs," a yellow bird and a butterfly! It also had a wonderful sign that said Spring forward - Fall Retreat!

The Zone declared both of the ladies winners, and the zone received a great MITE collection. It was wonderful fellowship - worship - food and fun!

Submitted by Cheryl Beyer



2012-2014 LWML Washington-Alaska District Roster

President

MaryLynn Huntwork

Public Relations Chairman

Gigi Lutz

Vice President of Servant Resources

Marie Chow

Quarterly Manager

Sonja Frazier

Vice President of Christian Life

Cheryl L. Beyer

Recycling Coordinator

Judy Peraino

Vice President of Human Care

Sandi Hall

Webmaster

Julie Onken

Vice President of Gospel Outreach

Marilee Ryan

2014 District Convention

Co-Chairmen

Linda Miller

Janet Rust

Recording Secretary

Peggy Lohse

Meeting Manager

Pam Rafferty

Financial Secretary

Deb Jones

Friends Into Serving Him®

Committee Chairman

Julie Funfar

Treasurer

Karen Schuster

Heart to Heart Committee

Chairman

June Williams

Counselor - West

Rev. Michael Wenzel

Counselor - East

Rev. Ken Schauer

Leader Development Committee

Chairman

Marilyn Schaefer

Archivist-Historian

Nancy Wyckoff

Nominating Committee Chairman

LeeAnn Tibbals

Corresponding Secretary

Linda B. Miller

Scholarship Committee Chairman

Sarah Edwards

Circulation Manager

Denise Crawford

Evergreen Echoes Editor

Sandi Schauer

Short Term Missions Chairman

Traci Blank

Parliamentarian

Carol Coerber

Young Women's Committee

Chairman

Amanda Haan

Planner

Heidi Penkert



***Please send mites to the Financial Secretary, Deb Jones.
Order mite boxes and complete rosters from the Corresponding Secretary, Linda Miller.***

District website:

www.wa-aklwml.org

Deadline for next issue: July 31, 2013.

Evergreen Echoes is published quarterly by Lutheran Women's Missionary League, Washington-Alaska District, an auxiliary organization of the Lutheran Church—Missouri Synod. *Evergreen Echoes* Editor: Sandi Schauer.

Evergreen Echoes

Lutheran Women's Missionary League
Washington-Alaska District
PO Box 615
Republic, WA 99166

ADDRESS SERVICE REQUESTED



Non-profit Org
US Postage Paid
Permit 42
Republic, WA 99166

LWML WA-AK Mission Grants 2012-14 Update

Veterans of the Cross – LCMS Development Services, St. Louis, MO \$5,000

The Veterans of the Cross provides small, periodic stipends and pastoral care for church work retirees (or their surviving spouses) who struggle to pay for basic living expenses, such as medicine or utility bills. Administered by Concordia Plan Services, the fund relies on donations raised by the Church Worker Grants unit of LCMS National Mission. A surprising number of “veterans of the cross” – retired pastors, teachers and their spouses – live in poverty. LCMS church workers who have retired often receive pensions so small that even with Social Security it is impossible to make ends meet. There are also a number of retirees whose employers did not participate in the Synod’s retirement benefits programs.

Prayer: Dear Heavenly Father, to You we give thanks and praise for pastors and other professional church workers who are now retired from faithful service in Your kingdom. We beseech You by Your Holy Spirit to stir up the hearts of other church organizations to increase a hundredfold our \$5,000 mite gift so that the temporal needs of your workers and their spouses may be joyfully met; through your Son, our Lord, Jesus Christ. Amen.

