



Prepare the way!



# Evergreen Echoes

LWML Washington-Alaska District

FALL, 2013

## In This Issue

|                            |    |
|----------------------------|----|
| President's Thoughts.....  | 1  |
| LWML.....                  | 2  |
| LWML WA-AK                 |    |
| District News .....        | 3  |
| Zone & Society Corner..... | 8  |
| District Roster.....       | 11 |

**EVERGREEN ECHOES WINTER  
DEADLINE: OCT. 31, 2013**



## Mission Statement of the LWML

The mission of the Lutheran Women's Missionary League is to assist each woman of The Lutheran Church—Missouri Synod in affirming her relationship with the Triune God so that she is enabled to use her gifts in ministry to the people of the world.

## Greetings from the LWML WA-AK District President

Pittsburgh-WOW! If you haven't heard about the convention—let me share a little; attendees chose 18 grants totaling \$1.83 million. That is quite a record. President Kay Kreklau shared with us "By God's grace we will continue to thrive because we are quenched by the water and the Word." Keynote speaker, Dr. LuJuana Butts, expanded on the convention theme "Quenched by the water for such a time as this." She reminded us, "It's not what you have to do, it's what you get to do!" Bible study leader, Donna Pyle, analyzed the scene with Jesus meeting the woman at the well, telling us to reach beyond our comfort zones and be "the biggest hose on the planet." During Sunday's closing worship service, The Rev. Dr. Victor Belton reached into the flowing fountain and asked, "How do we overcome the 'drought' of loss so that we can go forward as 'quenched'?"—by the living water of baptismal grace.



The Friday evening highlights were 1,000 "Mission in Motion" walkers paraded around the convention hall eager to exceed their pledge goal and the "Neighborhood Block Party" where everyone gathered for fun, games and prizes in the exhibit hall. What a blessing it was to be with so many sisters and brothers in Christ "Quenched by the Water!"

When it comes to airline flights, I normally know where I am going and I get to choose my seat; however, the trip home from Pittsburgh wasn't like that. I sat waiting in line with a fellow traveler to Washington State. She explained to me that on this particular flight you didn't get to choose your seat, it was decided in the order of check-in. I was a little put out by this as the chance of getting the right seat wasn't as good—or so I thought. She assured me it would be alright. God has a plan. Riding with God, we are assured of the right seat. He tells us from the beginning, a place in heaven is prepared for us beforehand. We don't need to worry or stand in line hoping to get the right seat. It is already chosen for those quenched by the living water.

This 2012-2014 Biennium is a great ride. I pray you will get onboard and ride with me as we *Prepare the Way* for the District Retreat and the Fall Rally, to be *Filled With His Will* at the 2014 District Convention.



I remain your sister in Christ, quenched by the living water, President MaryLynn







***Young Women's Committee***

Our two Young Women Representatives (YWRs) have returned from their convention experience in Pittsburgh full of energy and excitement to share with you. Please read their articles below, and *consider inviting a YWR to speak at an upcoming zone event*. Our YWRs are prepared to share about their experiences in Pittsburgh, what it is like to be a YWR at the national level, and ways God spoke to them during their time at the convention. Contact us if you want a YWR to speak at your event!

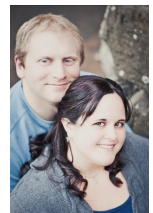
**Have you invited a young woman from your society to attend the upcoming LWML district retreat in Gig Harbor?** There will be special seating at meals for young women attendees so that they can get to know each other better. The retreat will be a refreshing time for them to reconnect with their Lord, and to meet other women from our district who share an interest in LWML. The retreat is a great way to introduce friends to LWML during a fun week-end of spiritual renewal. Reach out to someone and invite her along!

Your Young Women's Committee,  
Amanda Haan, Chairman  
Chris White



*From Heather Selset*

The best gift I brought back from the LWML Pittsburg Convention did not fit in my suitcase. It was an epiphany about what it means to be part of God's family. Before the convention, I do not think I knew what it meant to be "brothers and sisters in Christ." It is difficult for me, an only child, to understand a "sibling" relationship. Worshiping with thousands of people from around the country, hearing testimonies about how LWML blessed their lives, and crying with women I had only known for a day really woke me up.



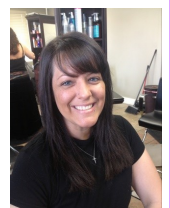
Since the convention, I have looked at people differently. The actor on TV is a child of the same God who created me. The unpleasant person I encounter is forgiven his or her sins through Christ's sacrifice just like I am. The girl in China I have never met is touched by the same Holy Spirit who guides my life. *That* is a mind-boggling thought. This awareness of God's family has made me more passionate to get women in my church united in ministry, and to strengthen our fellowship as children of God. Thank you, Washington-Alaska District, for giving me the opportunity to experience that feeling with so many other women!



*From Andromeda White*

As a YWR attending my first LWML convention, all I can say is WOW! Being new to LWML and seeing how much we do is an eye opener. The history of LWML, mites and missions, and scope of service projects amazes me. I did not expect to meet so many new and wonderful people who had so much to share. It is an experience I recommend to any YWR.

At the convention, the YWRs held the banner for countries we help in missions, did service projects, and learned the voting process on multiple issues. The missionary speakers were endearing and made me want to help with every mission. Rev. Will Main shared this observation: "There's no way God created me to be like you, just as he didn't create you to be like me." Donna Pyle did our Bible study, and I could not take notes fast enough. Talk about inspiration! I love when she said, "Our job is to point them to who can redeem them, not point out what's wrong with them." The best part of the trip? I had the opportunity to meet Donna Pyle, LCMS President Matthew C. Harrison, and Mia Koehne, the Saturday night entertainer!



This trip was just what I needed to help nudge me to be more involved with LWML. Thank you for the opportunity!

### Scholarship Committee

The Scholarship Committee met recently and has decided that the following people will be awarded scholarships for the year 2013-2014: Matt Gulseth, Gary Krurndieck, Daniel Merz, Greta Bernhardt; Michele Musegades, Rachel Blair, Chandler Schubbe, MaKenzie Carpenter. Congratulations to all of you. Please keep these people in your prayers as they are preparing “to serve the Lord with gladness.”

—Sarah Edwards, Scholarship Chairman



### Leadership Committee

As we set out to fulfill our call to share the good news of Jesus our Savior, the new “Christian Leaders’ Bible Study,” authored by the Rev. John Heckman (LWML Pastoral Counselor 2011-2015) is an inspiring resource. Whether we lead in our district, zone, society, or congregation, this Bible study will help us focus on our Christian joy and responsibilities as we lead.



In this three-part study we are reminded that Christian leadership is first and foremost, Christian. In Part One, Pastor Heckman begins with leader qualifications (1 Timothy 3:1-10), then guides us through Acts 6:1-4 where we learn about involving others, and Matthew 10:1-42 which equips us for ministry. Part Two helps us prioritize and identify the proper motives for our Christian service and leadership – again Timothy and Matthew provide Biblical guidance. Part Three cites multiple Old and New Testament references that define the characteristics of Christian leadership. This study could be used as a unit, perhaps as part of a weekend workshop, as individual Bible studies as a topic for zone or society meetings, or even as a personal review for one or two people.

The Leaders Guide and the Study Guide for this resource are available at [http://www.lwml.org/resources/leader\\_development/index.php](http://www.lwml.org/resources/leader_development/index.php). It is also offered as a printed copy for a small fee through the LWML catalog. The Leader Development Committee prays that all of us who are called to leadership rely on our Heavenly Father, His Son, our Savior, and His Holy Spirit, as we give thanks for the service He has set before us.

Your Leadership Development Committee,  
Margaret Ebert  
Marilyn Schaefer, Chairman

### Structure Committee

#### Back-to-School -> Back-to-Bylaws

The summer days are growing shorter, and there are “Back-to-School” sales advertised in the papers. Those are sure signs that fall activities are going to be in full swing soon. Is your society ready to start meeting again? Now would be a good time to take a look at your bylaws and see if they reflect how your group is operating. Changes will keep your society on task and ready to “Serve the Lord with Gladness.” Go to [www.wa-aklwml.org](http://www.wa-aklwml.org), click on the “Structure/Bylaws” button on the left side, and look for samples and other information on bylaws.

If you have any questions, please do not hesitate to contact Marie Chow (contact information is found under the “Roster” section of this newsletter).

Your District Structure Committee,  
Sandy Geisler  
Ruth Ann Shimoi  
Marie Chow, Chairman



Marie Chow and  
President MaryLynn

### *Mission Grants Updates*

We are half way through our biennium and take a look at the updated grant payments...more than half of our district mite goal of \$85,000 has been paid!! **Six grants have been Paid In Full.**

**Thank God and thank you all** for *Thinking Inside the Box* and sending in your mites. Keep up the great work.

It's time now to send in new grant proposals for consideration at our district convention in 2014. The deadline for submissions is October 31, 2013.

Thank you, Marilee Ryan, VP Gospel Outreach.



### *Nominating Committee*

The summer is just flying by! The LWML Convention in Pittsburg was fantastic. I hope many took advantage of the live streaming of the sessions on the LWML website. Those are still available and worth taking a look – especially the two worship services!

The Nominating Committee is hard at work getting ready for our elections next summer at our District Convention. The nomination forms were included in your bulk mailing that you received last spring or are on the district website. Please prayerfully consider nominations for our district leadership over the next biennium. **YOUR HELP IS NEEDED!** We are accepting nominations for President, Vice President of Servant Resources (bylaws!), Vice President of Human Care, Financial Secretary, Nominating Committee, and East Side Pastoral Counselor.



Is your pastor an LWML supporter? Consider nominating him for the position of counselor! The support of our pastors is a vital part of LWML. Check the WA-AK LWML website for bylaws to see the duties of each position.

The committee is planning something special for the District Retreat in September. Hope to see you there!!  
—LeeAnn Tibbals, Chairman

### *Recycling news*

Three hundred and three more dollars were added to the funds for convention expenses in July. Thank you. Everyone who has sent in boxes, please send me the tracking number so your zone gets credited for the contest. I found out last month just publishing the info in the bulletin or newsletter isn't enough. After mentioning the recycling program at a council meeting one of the members said he had a whole box of stuff – including an old laptop, several cell phones and ink cartridges. So continue to advertise this fund-raising project to your congregation and friends – even when it seems repetitive.



You can pack digital cameras, laptops, IPODS and GPS systems and cartridges together so the box has at least 20 items or is 20 to 40 lbs. Pack devices to prevent them from being damaged and to stop ink from getting on any other device. Go to [www.fundingfactory.com](http://www.fundingfactory.com) for more information.

“The earth is the Lord's and everything in it, the world and all who live in it; for he founded it upon the seas and established it upon the waters.” Psalm 24:1

Recycling Coordinator – Judy Peraino

### Human Care

Joy 2 U,

The human care committee is issuing a challenge to you. We challenge you to do a “**random act of kindness**” for someone this month. Encourage your family to get involved as well. We would love to print some of the ideas in future issues.

Remember to bring your items for the Mathew’s Meals Ingathering at the retreat. Information may be found in the bulk mailing.

—Submitted by Sandi Schauer, Human Care Committee member

### Short Term Missions

I hope everyone has had a great summer so far. As for missions: the thought I have for you is “do something.” God created you to do something. Look around you for an opportunity, my mission-minded friends.



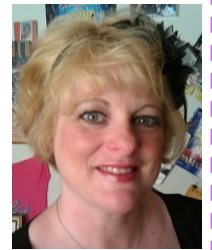
I will be visiting Redeemer Lutheran, Richland, on October 9 and the Fall Rally for Mt. Baker Zone at Snohomish, Zion Lutheran, on Oct. 12. I will be sharing about my own missions to Africa and how God brought a mission to my front door. It should be an inspiring time listening to how good God is.

—Serving the Master, Traci Blank, Chairman

### Friends Into Serving Him®

RETREAT!!! No, I don’t mean that you should run away, but rather run toward Gig Harbor! Bring yourself and your teens to the Fall Retreat for a refreshing and renewing weekend with your Sisters in Purple. The retreat agenda is full and appropriate for all ages and your teens can get to know each other and get excited to see each other again in Wenatchee at District Convention. See you there!

—Julie Funfar, Friends Into Serving Him®—Chairman



### Christian Life

#### Martha and Mary – Distracted with much serving!

Well, summer is moving along at a rapid pace; and I have a million and two projects that are giving me much anxiety, stress and fun! Family, Friends, Church, LWML – the RETREAT, Work, Yard Work, Vacation, Sun Screen, Life, Illness, Death... they all yank and scatter my mind, too often, to frustrated distraction. The Gospel lesson recently was the story where Mary sat at Jesus’ feet while Martha did everything...seriously I can relate to Martha! It hit a nerve with me as I listened to the Word — that Jesus looked at it a bit differently than we “Martha’s” do. <sup>41</sup> *But the Lord answered her, “Martha, Martha, you are anxious and troubled about many things, <sup>42</sup> but one thing is necessary. Mary has chosen the good portion, which will not be taken away from her.” Luke 10:41-42 (ESV)*

Jesus has come to us! We, too, are to sit at Jesus’ feet, to worship Him, to hear His Word, and to receive His Peace. One thing is necessary - Jesus! In all we do - let’s not be so distracted with much serving that we are anxious and troubled by many things... let’s sit at Jesus’ feet and receive His good portion that will not be taken away from us. So now that you are inspired to sit at Jesus’ feet and listen for a while... How about coming to the District Retreat for a weekend of fellowship in the WORD? There is still time to register! You can find all the information on the District website—[www.wa-aklwml.org](http://www.wa-aklwml.org).

Your sisters in Christ,  
Cheryl L. Beyer, VP Christian Life, and  
The Christian Life Committee

“**HOLY ✠ HOLY ✠ HOLY**”  
*The work of the angels...*



### *Heart to Heart Sisters*

During the week of the 2013 Lutheran Women's Missionary League Convention in Pittsburgh, PA, I also attended the Heart to Heart Sisters Leader training. We began on Tuesday afternoon, June 25. I met sisters from Africa, South America, Indonesia and the U.S. who were also Heart to Heart Sisters Leaders in their home LWML Districts.

Heart to Heart Sisters committees joined us on Wednesday afternoon with Vicky Druge and Cathy Benzler from our WA-AK District joining me in training at that time. *"The purpose of the Heart to Heart Sisters Committee is to motivate, equip, and ensure opportunities for women of diverse ethnic groups to serve the church and witness to the world. (lwml.org)." The LCMS is seeing an increase of people coming as refugees from countries that persecute Christians. Many of these refugees first learn about Jesus through LCMS Missionaries. They leave their homes, countries, families, belongings and livelihood to be able to worship our Lord freely. They come to the U.S. as Lutheran Christians. The LCMS is reaching out to people from non-Anglo backgrounds to bring the message of salvation through Christ. Heart to Heart Sisters is a part of the LWML, and it is our goal to include all women into our local LWML societies. During this WA-AK District Biennium the Heart to Heart Sisters committee will be thrilled to bring to you the Heart to Heart Sisters presentation and Bible study for your next LWML zone rally, retreat or whenever your women come together. Please contact me, and we will set a date. I look forward to seeing each one of you very soon.*



Your Sister,  
Heidi Penkert, Committee Chairman of Heart to Heart Sisters  
Allison Akahoshi, Massie Hicks, Vicky Druge, Members



---

### *Counselor's Chat Corner*

God's Blessings to the LWML!

I hope to give you a perspective you might not get very often.... The LWML convention from a man's perspective! Thank you for sending me. It is a joy to be among a group of people who not only talk and plan to get things done, and then do what they say. For those of you who have gone to a convention, you know what they are like. For the rest of you, the event for me might be explained as a constant state of "applied comfortableness." Applied because there was definitely an air of mission and goals to be accomplished, and comfortableness because it seemed that everyone there already knew everyone else. You might not know a particular person's name when you first saw her, but it was a pretty good guarantee that you would after you'd talked to her for a few minutes.

You have already been made aware of the (attainable) mission goals that were set at convention. Without a doubt God was present. You could see it on the faces and through the voices being lifted during the business sessions, the recreation times and in our combined worship to our God of all creation. You were well represented at the convention members of the LWML! All that is left to do is to *serve the Lord with gladness*.

In your service and His, Pastor Mike Wenzel



## Zone and Society Corner

### *Grace Lutheran, Everett, WA Daughters' of Grace Brunch*

Thank you to the 24 women who attended the brunch on May 11. The group enjoyed a wonderful time as they "savored and shared the rich indulgence of God's grace." Marilee Ryan led the Bible study, "A Chocolate Life," (by Deb Burma). The ladies learned how to enjoy the sweet morsels of joy in our lives along with the bitter nuggets of pain – that God has a plan, a map, for us through His Word. They learned how to be still and accept God's peace and comfort. God's forgiveness and grace cover our messes like a thick layer of frosting. He is our Great Chocolatier, molding us in Christ's image. Like a chocolate fountain, "The grace of our Lord overflowed for me with faith and love that are in Christ Jesus." 1 Timothy 1:14.

After a great lunch provided by Kathy Schultz, Sue Tenoll, Marilee Ryan, and Carol Davis, a chocolate trivia game was played (amazing what you can find online!), and candy bars were matched with Bible verses. Everyone savored chocolate dipped strawberries provided by Kathy Lawson, and slowly tasted the frosting (special blessings on the foundation of our cupcake lives), and thanked God for those many blessings. Thank you Jackie Fannin for baking our sweet treats.

Christ went to the cross, tasting the bitter pain, suffering and death in our place, so that we might maintain a sweet outlook and look forward to our sweet salvation. Sink your teeth into all of Scripture. "Oh, taste and see that the Lord is good!" Psalm 34:8

—Submitted by Marilee Ryan



### *Fall Rallies*

**Alaska:** September 20-22; Lamb of God, Wasilla, AK, L.A.M.B. OF GOD; Love, Atonement, Mercy, Blessings: PING, Mary Lynn Huntwork

**Blue Mountain:** October 5, Kennewick, WA; PING, Amanda Haan

**East Inland Empire:** October 19, Hope Lutheran, Greenacres, WA

**Hood Canal:** October 19, Evergreen Lutheran, Seabeck, WA; PING, Mary Lynn Huntwork, Marilee Ryan, Amanda Haan

**Inter-Valley:** October 19, Calvary Lutheran, Sunnyside, WA

**Lake Washington:** October 12, Resurrection Lutheran, Des Moines, WA; Maketis and Beniam Habthemariam, Ethiopian church planters

**Mount Baker:** October 12

**North Columbia:** September 14, PING, Hope Lutheran, Tonasket, Mary Lynn Huntwork, Marilee Ryan, Amanda Haan

**Olympic:** October 5, St. Timothy Lutheran, Edmonds, WA; PING, MaryLynn Huntwork, Marilee Ryan

**Rainier:** October 19, Immanuel Lutheran, Puyallup, WA; Psalm 119:105, PING, MaryLynn Huntwork, Marilee Ryan, Amanda Haan

**South Columbia:** October 26, Our Savior, Ephrata, WA; MaryLynn Huntwork



## *Bethlehem Lutheran, Yakima*



LWML members from all over the Northwest with Dr. Paul Maier when he spoke at Bethlehem, Yakima.

---

## *Alaska Zone*

Greetings from Alaska:

The National Convention "Quenched by the Water" in Pittsburgh, PA on June 27-30 was awesome and inspirational. We had 541 attendees at the convention and the goal for mites for 2013-15 is \$1,830,000. Every church and mission worldwide has MIA which means "Mites in Action." LWML has also given \$100 million dollars in grants in the past 71 years. WOW what a phenomenal amount of money! Keep up the good work. Our mission walk at the convention brought in \$67,392.60 another blessing from our good Lord and Savior.

The entertainment and story of Mia Koehne truly inspired and motivated me. What an outstanding speaker and recording artist! When she sang, her songs conveyed the powerful message of a person who came back from living a life of a sinful non-Christian life to finding Jesus our Lord and Savior. Her songs were so powerful; they told her story of the struggle and depression she was going through. With prayer and begging God to forgive her, she came back to her husband and children asking for forgiveness. Mia is married to a pastor.

I was so thankful to represent Alaska at the convention. On June 14 I had a mini-stroke. With God's healing power and many prayers, my husband and I were able to attend the convention. My loving husband, Don, pushed me around in a wheel chair so I could attend the meetings. Thank you to the other delegates who cared for me, helped me, and prayed for me. Always remember God is there for you anytime especially when you need him the most.



God's Blessings to you always,  
Linda Gerdes, Zone President

**PLEASE COPY THIS ISSUE FOR THE LADIES IN YOUR CHURCH! PRINT IT IN GRAYSCALE FOR COPYING ON THE COPY MACHINE OR PRINT OUT ALL THE COPIES IN COLOR. IF YOU WOULD LIKE TO RECEIVE ISSUES VIA E-MAIL, PLEASE CONTACT THE CIRCULATION MANAGER, DENISE CRAWFORD.**

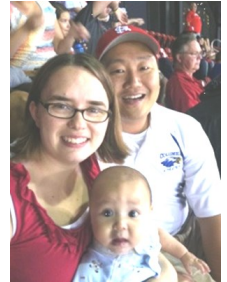
### *Blue Mountain Zone*

The Blue Mountain Zone will have its Fall Rally on October 5<sup>th</sup> at Bethlehem, Kennewick, WA. Amanda Haan will show us the PING program.  
—Wilma Gardner, President Blue Mountain Zone

### *Concordia Lutheran, Pullman, WA*

On July 7, 2013, Pastor Timothy Bayer was installed as Pastor at Concordia Lutheran Church, Pullman, WA. He is pictured here with his wife, Beth, and son, Ethan.

Tim graduated from Concordia University in River Forest, Illinois, in 2005 with a BA in Psychology and Sociology, and Concordia Seminary in 2009 with a Master of Divinity, specializing in Missions and Leadership. Tim served on staff at Lutherhaven Ministries as a counselor, summer program coordinator, and Director of the Institute for Servant Leadership (now known as Idaho Servant Adventures). He met his wife, Bethany (Miller) Bayer, while working at camp, and they were married, July 22, 2007. Besides his time at Lutherhaven, Tim has also served as a Student Ministries Coordinator, Church Planter, and most recently as Missions Pastor at Faith Lutheran Church in St. Louis, Missouri. Tim brings over 10 years of diverse ministry experience to Concordia.



Submitted by MaryLynn Huntwork

### *Lake Washington Zone*

Lake Washington fall rally will be held on October 12, 2013 at Resurrection Lutheran Church in Des Moines. Speakers will be Maketis and Beniam Habthemariam. Ethiopian church planters at the old Beacon Hill Lutheran Church. We begin at 8:30am with breakfast and the program begins at 9. Submitted by Aletha Voges

### *Olympic Zone*

I have been known to put off major organization tasks—it's called procrastinating! Recently, our zone has had some transitions, and I was "blessed" with several boxes of old papers—minutes, treasurers' reports, event posters, etc. Whenever I thought about going through those old boxes, though, I mentally cringed. "Lord, my plate is already SO FULL—and now I have to deal with these ancient-of days boxes?!" I knew, however, it would be best if I dealt with them before leaving for the LWML Convention in Pittsburgh.

I woke up early one morning and began sifting through that paperwork—some going as far back as the mid-1960s. What I discovered through it all was this: the women from our zone and district have been dedicated to the LWML. God was faithful to these women and societies. The dedication of these women and the fruit they bore was amazing. I sat spellbound with tears in my eyes. God was guiding me to see that the work done then and what we continue to do now in LWML IS important and IS making a difference in many lives. We are His hand here on earth!

I really didn't expect to have such a reflective, inspirational experience that morning as I went through those old papers--far from it! Thanks, Lord, and thanks to all of you for your wonderful support in helping me attend the LWML Convention. My time with "the boxes" was a foretaste of things to come—the convention helped solidify my commitment to God and missions. Praise His holy name! Serve the Lord with gladness!

The Olympic Zone Fall Rally is taking place October 5th at St. Timothy's in Edmonds, WA. We will have a PING presentation at this event and we are very excited about this!

Mary Abdi, Olympic Zone President



## 2012-2014 LWML Washington-Alaska District Roster

**President**

MaryLynn Huntwork

**Vice President of Servant**

**Resources**

Marie Chow

**Vice President of Christian Life**

Cheryl L. Beyer - Olympic

**Vice President of Human Care**

Sandi Hall

**Vice President of Gospel Outreach**

Marilee Ryan

**Recording Secretary**

Peggy Lohse

**Financial Secretary**

Deb Jones

**Treasurer**

Karen Schuster

**Counselor - West**

Rev. Michael Wenzel

**Counselor - East**

Rev. Ken Schauer

**Archivist-Historian**

Nancy Wyckoff

**Corresponding Secretary**

Linda B. Miller

**Circulation Manager**

Denise Crawford

**Evergreen Echoes Editor**

Sandi Schauer

**Parliamentarian**

Carol Coerber

**Planner**

(Open)

**Public Relations Chairman**

Gigi Lutz

**Quarterly Manager**

Sonja Frazier

**Recycling Coordinator**

Judy Peraino

**Webmaster**

Julie Onken

**2014 District Convention**

**Co-Chairmen**

Linda Miller – S. Columbia

Janet Rust—S. Columbia

**Meeting Manager**

Pam Rafferty

**Friends Into Serving Him®**

**Committee Chairman**

Julie Funfar

**Heart to Heart Sisters Committee**

**Chairman**

Heidi Penkert

**Leader Development Committee**

**Chairman**

Marilyn Schaefer

mlsandvls@msn.com

**Nominating Committee Chairman**

LeeAnn Tibbals

**Scholarship Committee Chairman**

Sarah Edwards

sedwards90@comcast.net

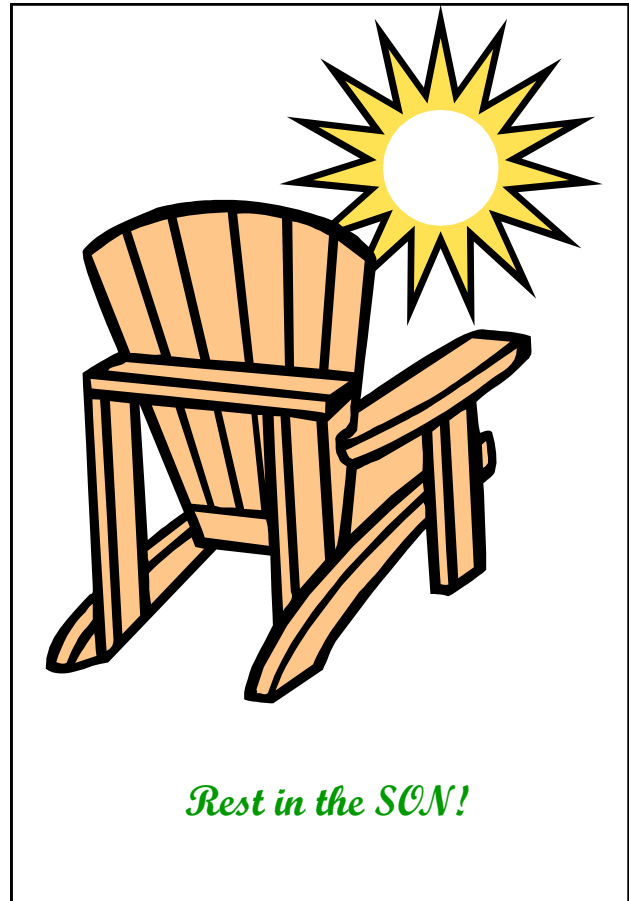
**Short Term Missions Chairman**

Traci Blank

**Young Women Committee**

**Chairman**

Amanda Haan



***Please send mites to the Financial Secretary, Deb Jones.  
Order mite boxes and complete rosters from the Corresponding Secretary, Linda Miller.***

District website:

[www.wa-aklwml.org](http://www.wa-aklwml.org)

***Deadline for next issue: Oct. 31, 2013.***

*Evergreen Echoes* is published quarterly by Lutheran Women's Missionary League, Washington-Alaska District, an auxiliary organization of the Lutheran Church—Missouri Synod. *Evergreen Echoes* Editor: Sandi Schauer.

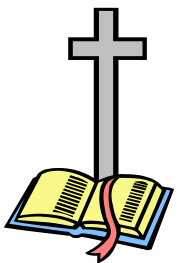
## *Evergreen Echoes*

Lutheran Women's Missionary League  
Washington-Alaska District  
PO Box 615  
Republic, WA 99166

ADDRESS SERVICE REQUESTED



Non-profit Org  
US Postage Paid  
Permit 42  
Republic, WA 99166



### *Retreat Info*

**LWML WA-AK  
District Retreat  
Wesley Inn – Gig Harbor, WA  
September 27-29, 2013**

*And he will send his angels with a loud trumpet call, and they will gather his elect from the four winds, from one end of the heavens to the other. Matthew 24:31*

Come receive God's gifts in Word and Sacrament as we worship together and learn what the Bible teaches about ANGELS!

Come enjoy fellowship and fun with your sisters in Christ!

**Pack your Bible and suitcase!**

**Bring your Mite Auction \$\$ (some Purple \$5's too)**

and get ready for the

**"Zone-mazing" Entertainment and Mite Auction!**



**Registration, Hotel, and Ingathering information may be found on the district website: [www.wa-aklwml.org](http://www.wa-aklwml.org)**